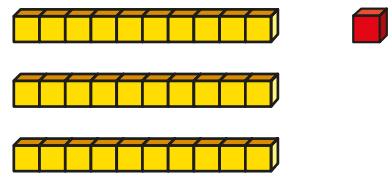
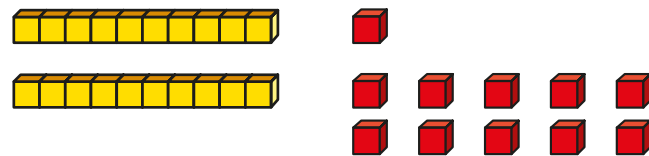


Subtract two 2-digit numbers (across a 10)

1 a) What number is shown?



b) What number is shown?



What do you notice?

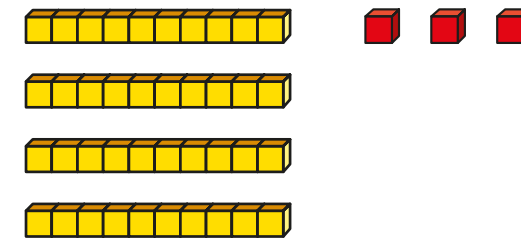
Subtract 13

c) What number is left?

d) Complete the subtraction.

$$\square - \square = \square$$

2 Max is working out $43 - 25$



He exchanges 1 ten for 10 ones.

a) Draw base 10 to show Max's number after the exchange.

b) Complete the subtraction.

$$43 - 25 = \square$$

3 Use base 10 to work out the subtractions.

a) $23 - 6 = \square$

d) $45 - 26 = \square$

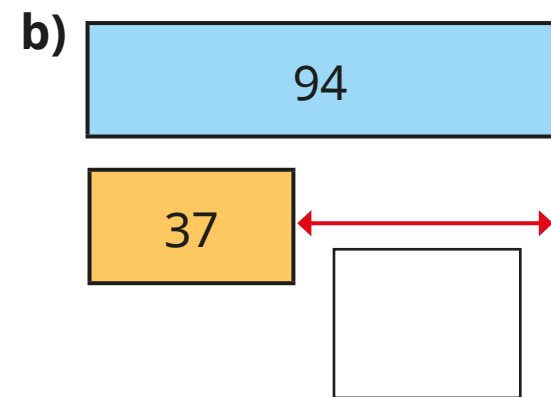
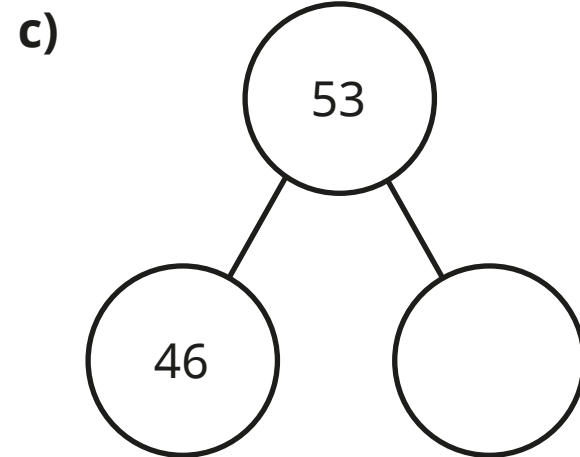
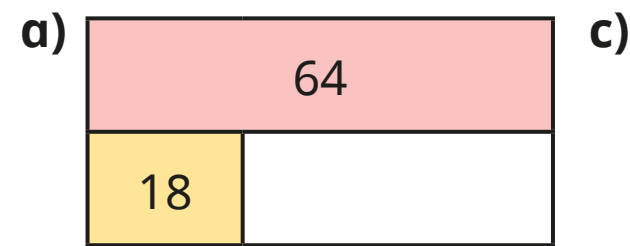
b) $33 - 7 = \square$

e) $63 - 35 = \square$

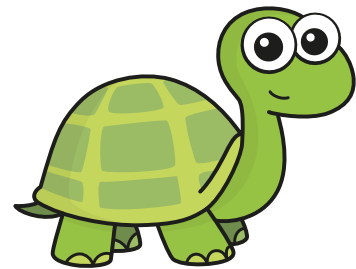
c) $33 - 17 = \square$

f) $82 - 24 = \square$

4 Work out the missing parts.



5 Tiny is finding the difference between 65 and 29



9 ones - 5 ones = 4 ones
and 6 tens - 2 tens = 4 tens,
so $65 - 29 = 44$

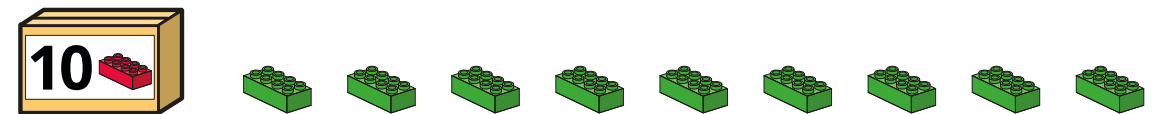
What mistake has Tiny made?

Work out the difference between 65 and 29

6 Mo has 33 bricks.



Kim has 19 bricks.



a) How many bricks do Mo and Kim have altogether?

b) How many more bricks does Mo have than Kim?

